



Jon Renau®
WIGS COLLECTION

FAIR FASHION®
2020

Jon Renau®

WIGS COLLECTION

INDICE	
ALLURE	p. 18
ANNE HD	p. 31
BROOKLYN	p. 8
DIANE	p. 10
DREW HD	p. 30
ELIZABETH HD	p. 29
EVAN	p. 12
EVE HD	p. 28
HALSEY	p. 4
HAUTE HD	p. 24
HEAT HD	p. 25
IGNITE HD	p. 27
MARION	p. 5
JAZZ	p. 19
JANUARY	p. 9
JULIA	p. 16
KRISTEN	p. 14
KRIS	p. 20
MARISKA PETITE	p. 11
MEG	p. 15
MIRANDA	p. 7
NAOMI HD	p. 26
NATALIE	p. 21
PARKER	p. 3
PEACHES	p. 22
RUBY	p. 13
SCARLETT PETITE	p. 6
VICTORIA	p. 17

SMARTLACE

Jon Renau propone un innovativo lace front realizzato in tessuto estremamente sottile. SmartLace è lavorato a mano, i capelli sono annodati uno a uno creando l'illusione che stiano crescendo dalla cute. La linea SmartLace offre il massimo effetto estetico ed il massimo comfort con il minimo peso!

OPEN TOP - LAVORATE A MACCHINA

Le parrucche O'Solite sono facilmente maneggiabili, soffici e confortevoli. Lavorate a macchina con cura mantengono sempre l'acconciatura iniziale. La calotta aperta permette una maggior aerazione della cute, inoltre l'esclusivo design ne riduce il peso. Le parrucche O'Solite hanno infatti un peso ridotto rispetto alle tradizionali parrucche a macchina più pesanti.

LINEA HD

Fra le fibre resistenti al calore presenti sul mercato la fibra HD di Jon Renau rappresenta un prodotto di eccellenza tecnologicamente avanzato. Una fibra leggerissima e simile al tatto al capello vero può essere lavorata con calore fino a 135° gradi. Le parrucche HD possono essere perciò asciugate con phon o acconciate a piacere, piastrate o aricchiate.

CALIFORNIA BLONDE EXCLUSIVE COLOR COLLECTION



Scopri i nuovi fantastici biondi made in California!



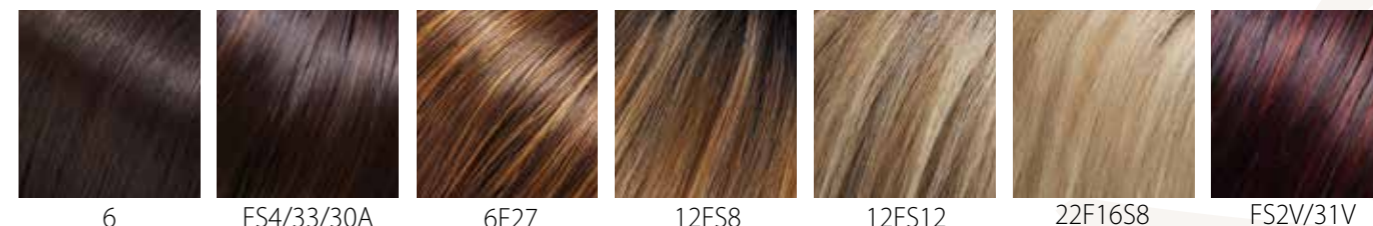
SMART LACE

Parker

MONO PART
LACE FRONT
COLORE FOTO: 22F16S8



COLORE FOTO: 22F16S8



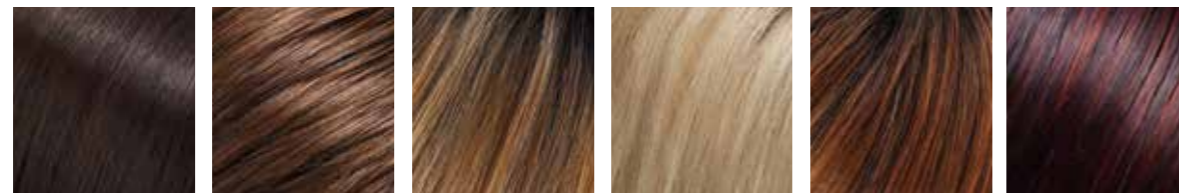
SMART LACE



Halsey

LAVORATA A MACCHINA
LACE FRONT
COLORE FOTO: FS4/33/30A

COLORE FOTO: FS4/33/30A

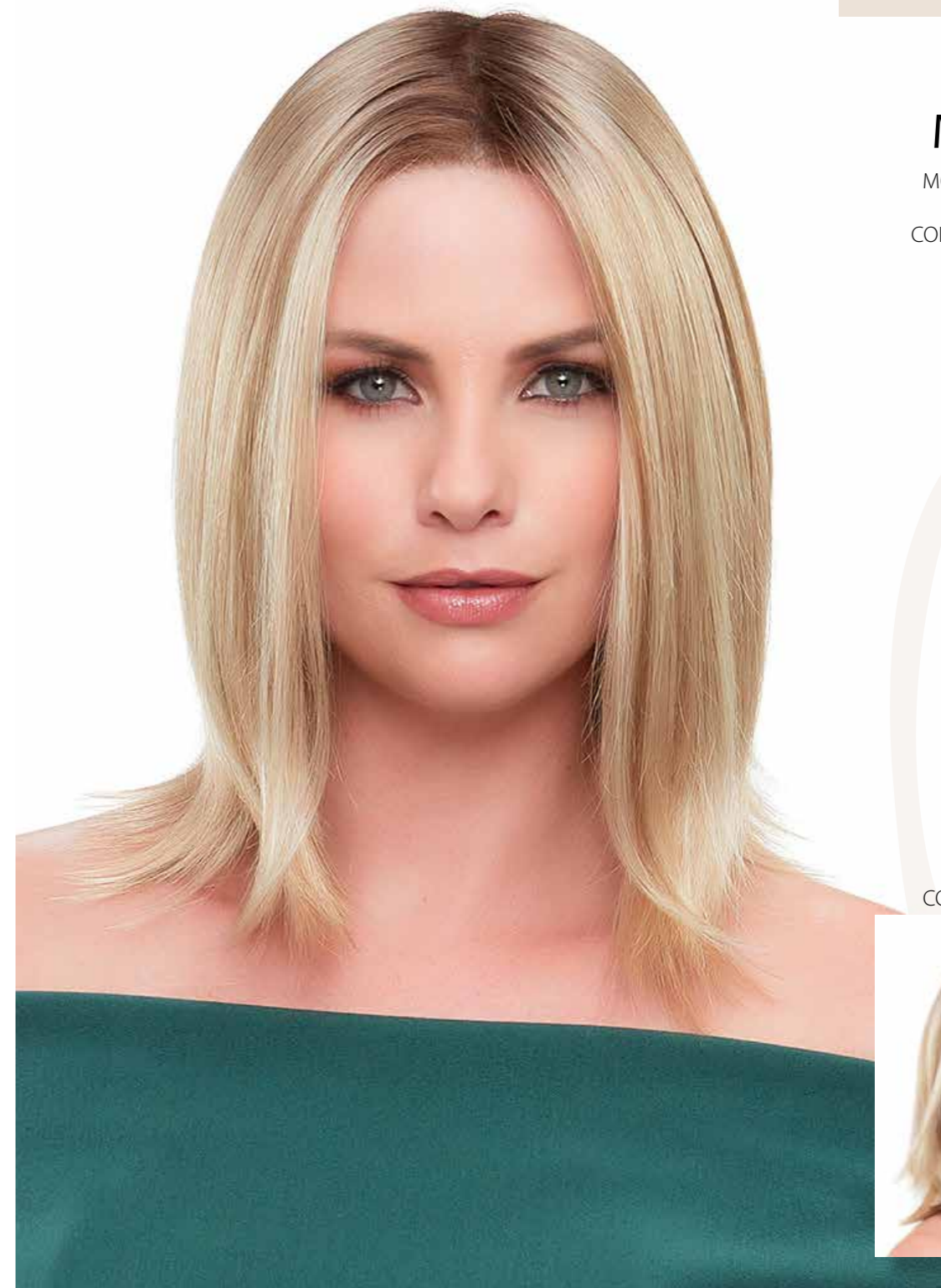


6 8/32 12FS8 22F16S8 30A27S4 FS2V/31V



FS4/33/30A

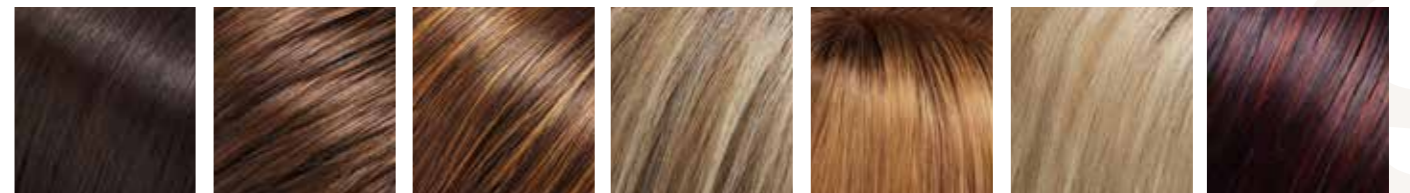
SMART LACE



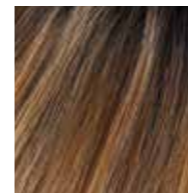
Marion

MONOFILAMENTO
LACE FRONT
COLORE FOTO: 12FS8

COLORE FOTO: 12FS8



6 8/32 6F27 12FS12 1426S10 22F16S8 FS2V/31V

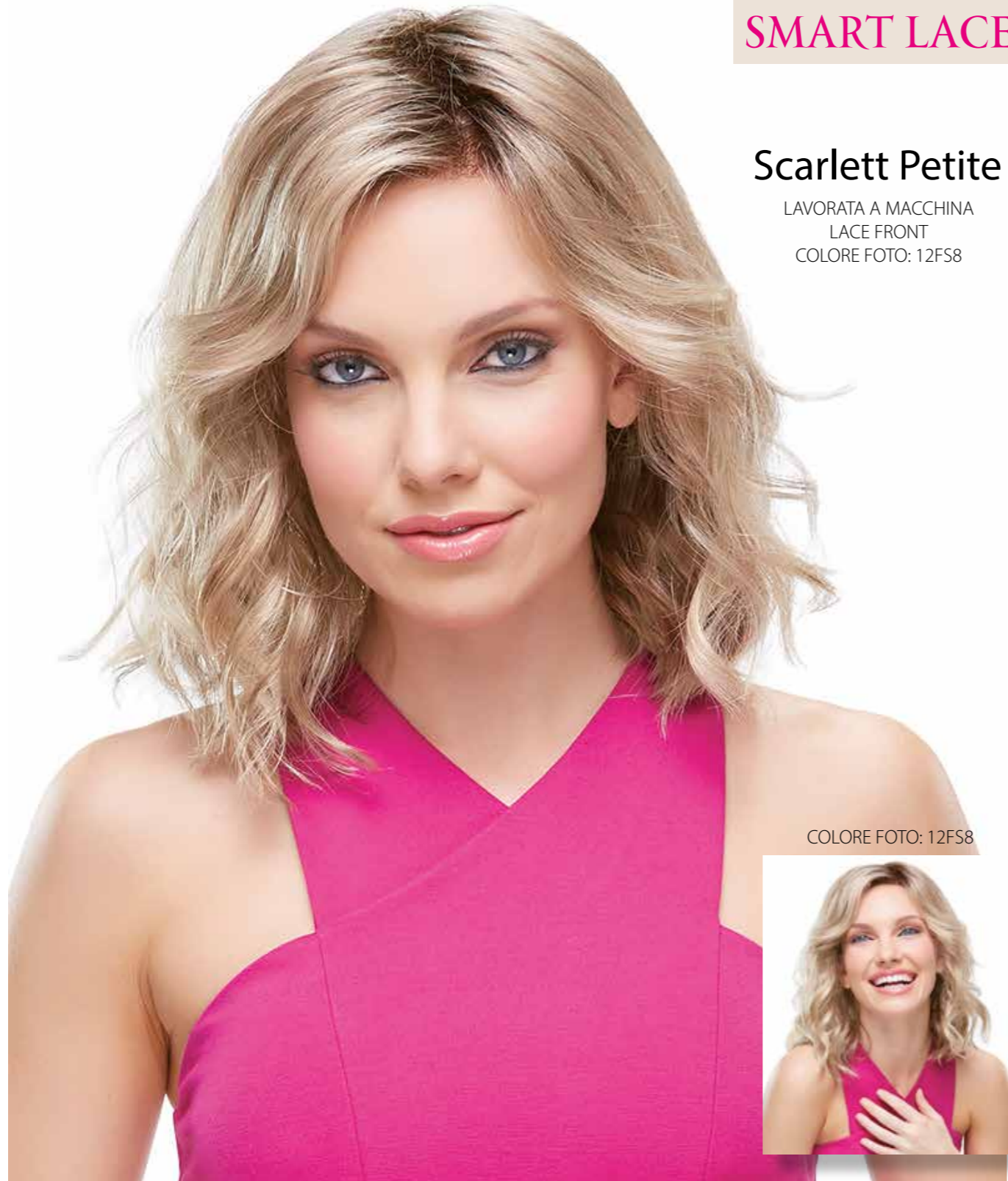


12FS8

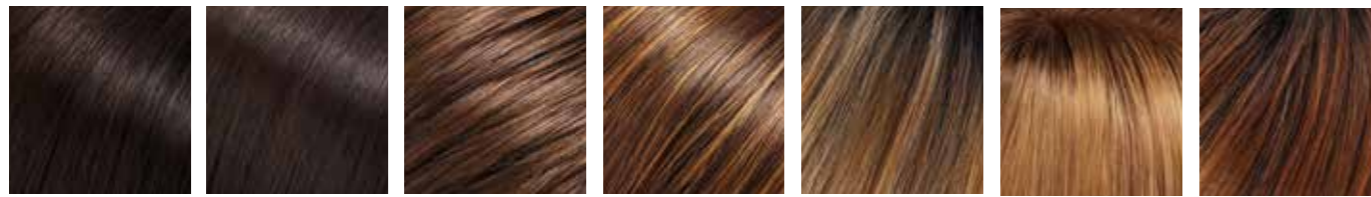
SMART LACE

Scarlett Petite

LAVORATA A MACCHINA
LACE FRONT
COLORE FOTO: 12FS8



COLORE FOTO: 12FS8

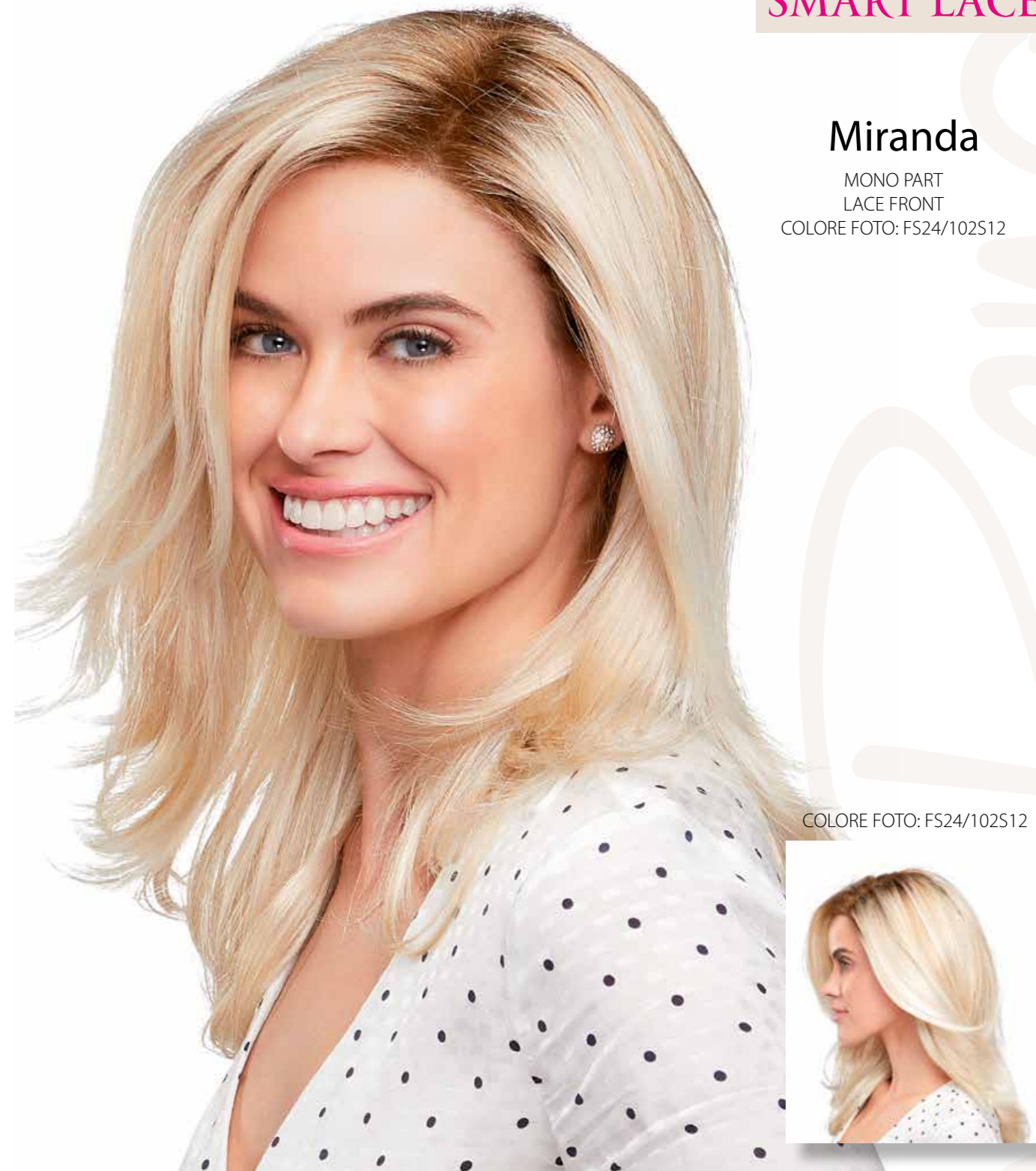


4/33 6 8/32 6F27 12FS8 1426S10 30A27S4

SMART LACE

Miranda

MONO PART
LACE FRONT
COLORE FOTO: FS24/102S12



COLORE FOTO: FS24/102S12



4/33 6 6F27 12FS8 1426S10 FS24/102S12

SMART LACE

Brooklyn

MONOFILAMENTO
LACE FRONT
COLORE FOTO: 22F16S8



COLORE FOTO: 22F16S8



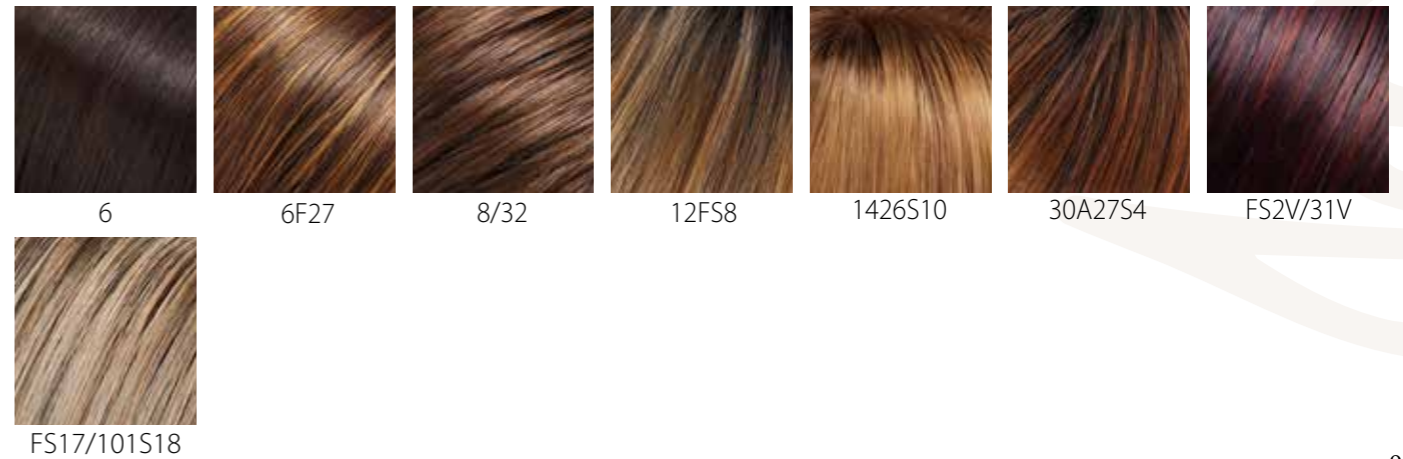
SMART LACE

January

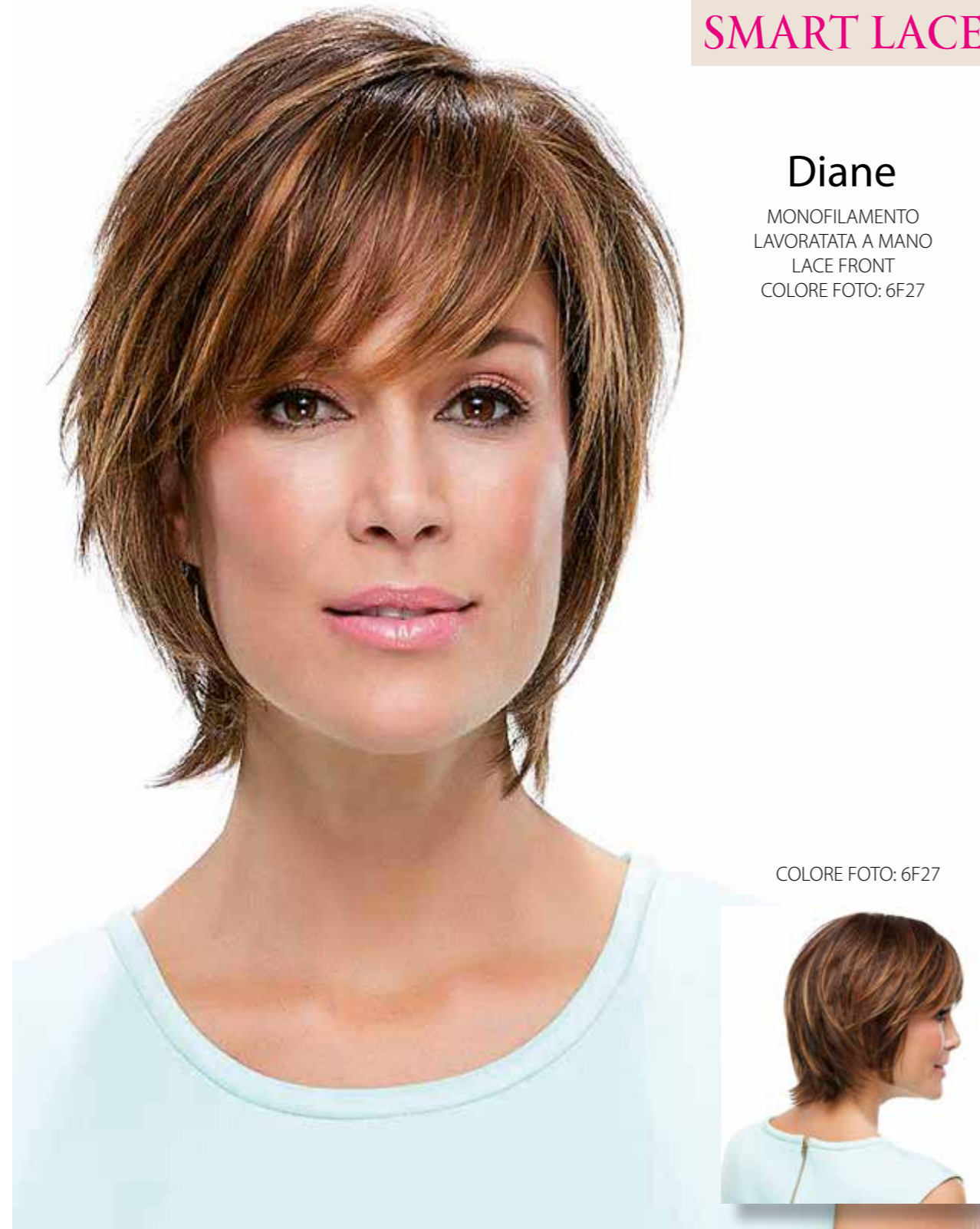
MONOFILAMENTO
LACE FRONT
COLORE FOTO: FS17/101S18



COLORE FOTO: FS17/101S18



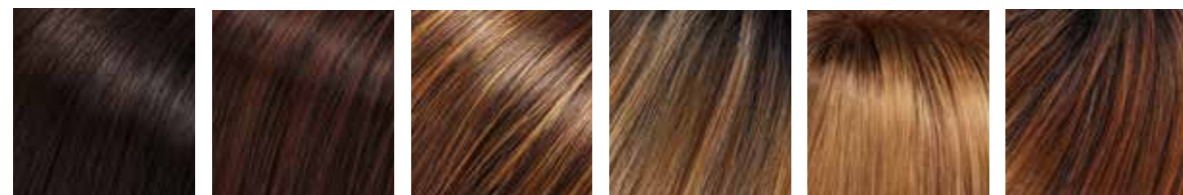
SMART LACE



Diane

MONOFILAMENTO
LAVORATA A MANO
LACE FRONT
COLORE FOTO: 6F27

COLORE FOTO: 6F27



4 4/33 6F27 12FS8 1426S10 30A27S4

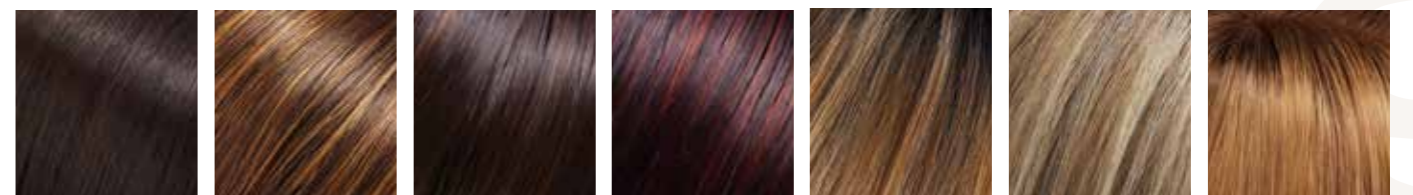
SMART LACE



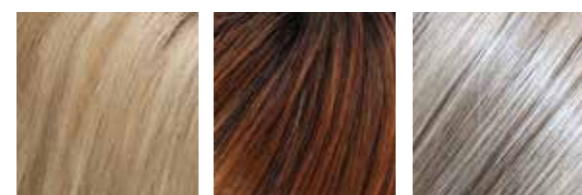
Mariska Petite

MONOFILAMENTO
LAVORATA A MANO
LACE FRONT
COLORE FOTO: FS2V/31V

COLORE FOTO: FS2V/31V



6 6F27 FS4/33/30A FS2V/31V 12FS8 12FS12 1426S10



22F16S8 30A27S4 56F51

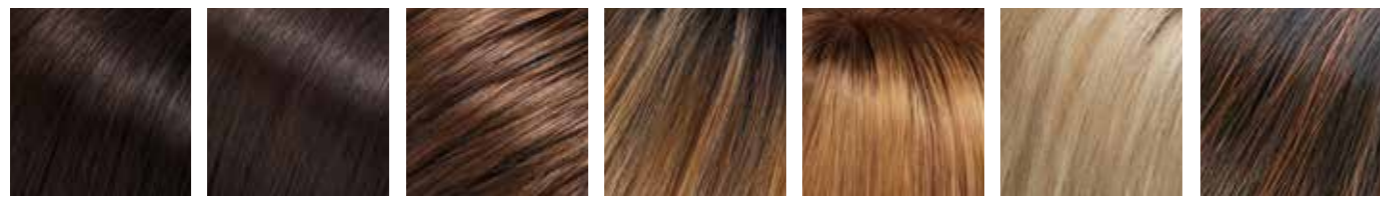
SMART LACE

Evan

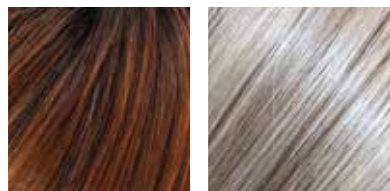
MONO CROWN
LACE FRONT
COLORE FOTO: 1BRH30



COLORE FOTO: 1BRH30



4 6 8/32 12FS8 1426S10 22F16S8 1BRH30



30A27S4 56F51

SMART LACE

Ruby

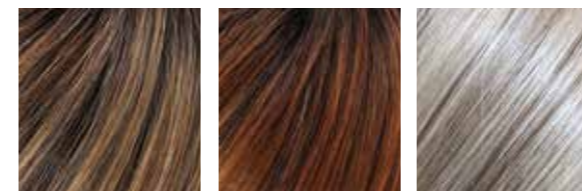
MONO CROWN
LACE FRONT
COLORE FOTO: 12FS8



COLORE FOTO: 12FS8



6 6F27 8/30 FS4/33/30A FS2V/31V 12FS8 1426S10



24BT18S8 30A27S4 56F51

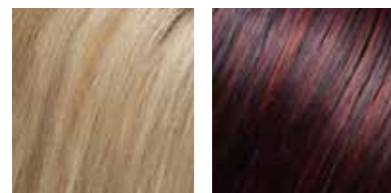
SMART LACE



Kristen

LAVORATA A MACCHINA
LACE FRONT
COLORE FOTO: 12FS8

COLORE FOTO: 12FS8



22F16S8

FS2V/31V

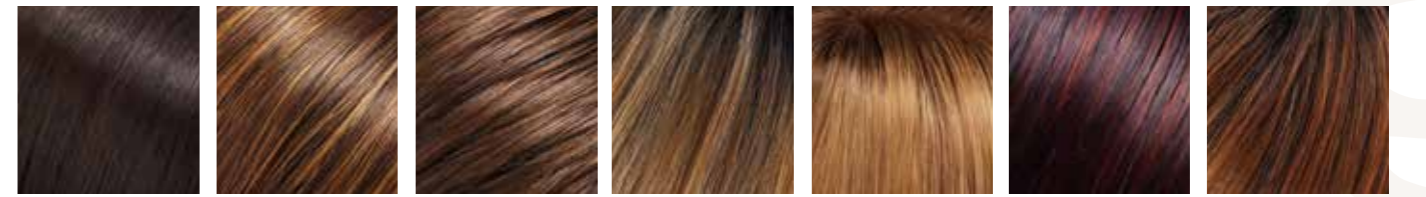
SMART LACE



Meg

MONOFILAMENTO
LAVORATA A MANO
COLORE FOTO: 8/32

COLORE FOTO: 8/32



6

6F27

8/32

12FS8

1426S10

FS2V/31V

30A27S4

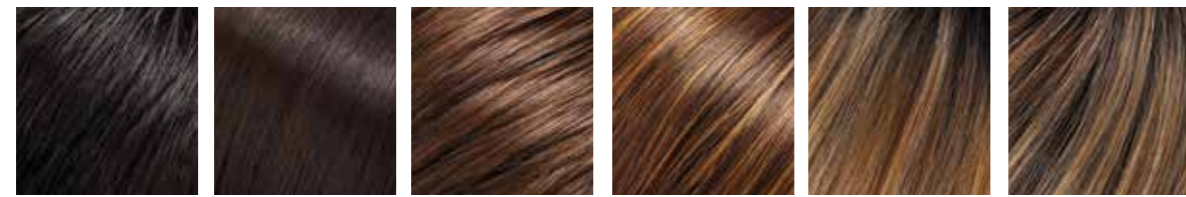
SMART LACE



Julia

MONOFILAMENTO
LACE FRONT
COLORE FOTO: 8/32

COLORE FOTO: 8/32



1B 6 8/32 6F27 12FS8 24BT18S8

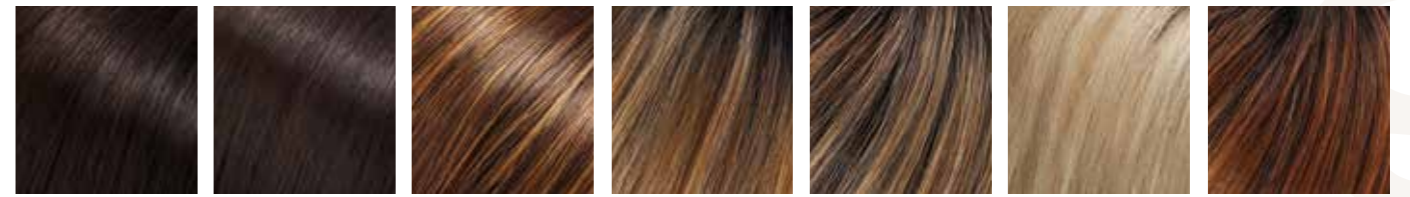
SMART LACE



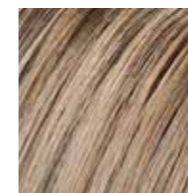
Victoria

MONOFILAMENTO
LAVORATA A MANO
LACE FRONT
COLORE FOTO: FS17/101S18

COLORE FOTO: FS17/101S18



4 6 6F27 12FS8 24BT18S8 22F16S8 30A27S4



FS17/101S18

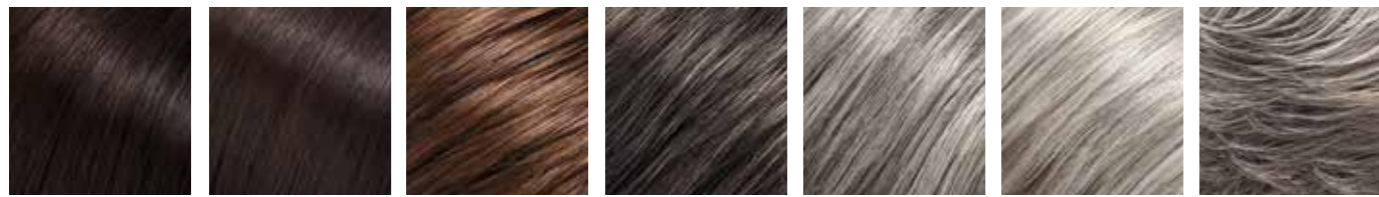
OPEN TOP

Allure

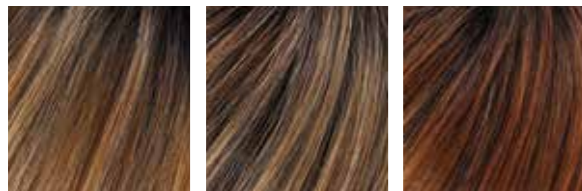
LAVORATA A MACCHINA
COLORE FOTO: 12FS8



COLORE FOTO: 12FS8



4 6 8/32 44 51 56 92



12FS8 24BT18S8 30A27S4

OPEN TOP

Jazz

LAVORATA A MACCHINA
COLORE FOTO: 6F27



COLORE FOTO: 6F27

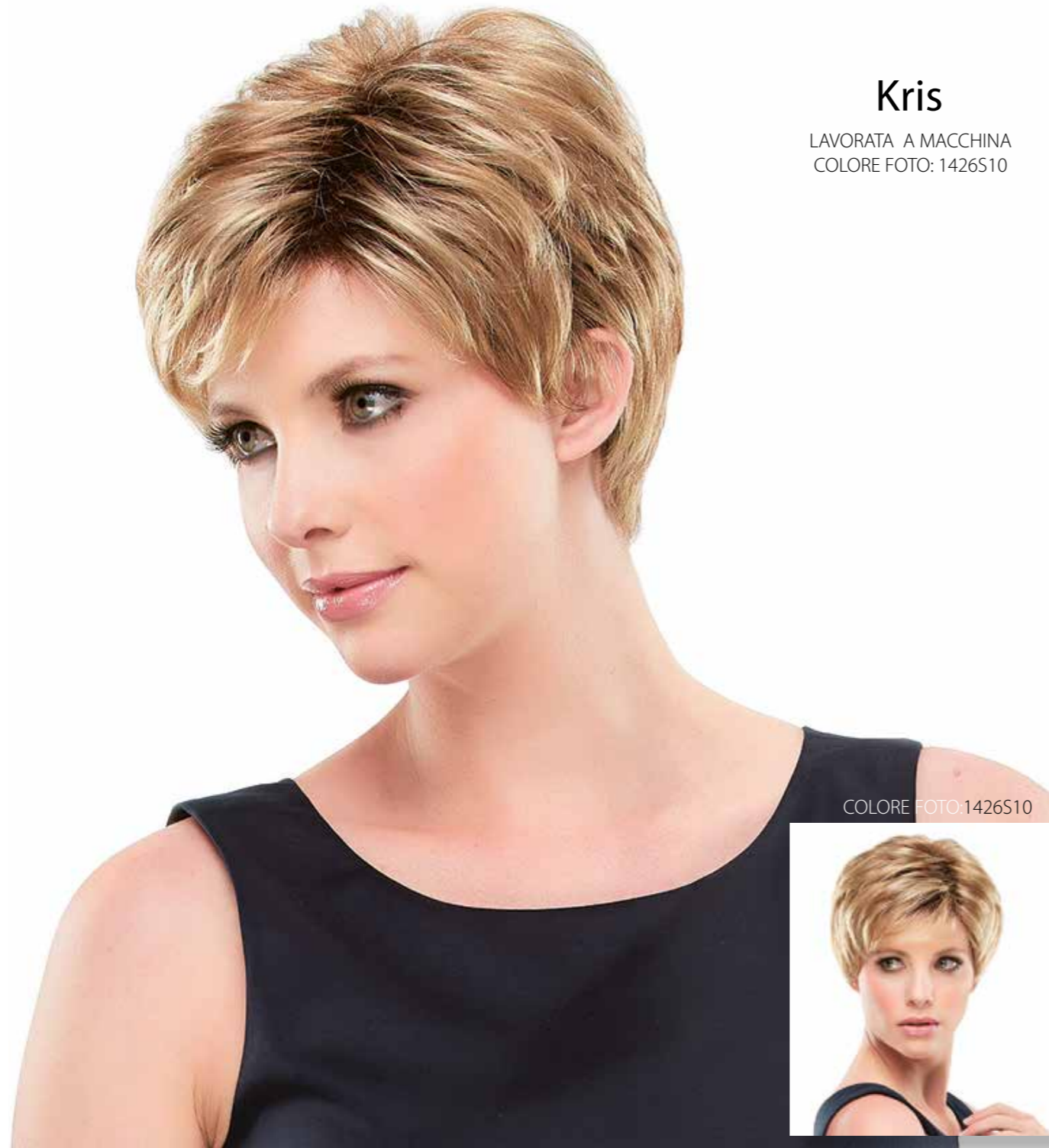


4 6 8/32 6F27 12FS8 24BT18S8 30A27S4

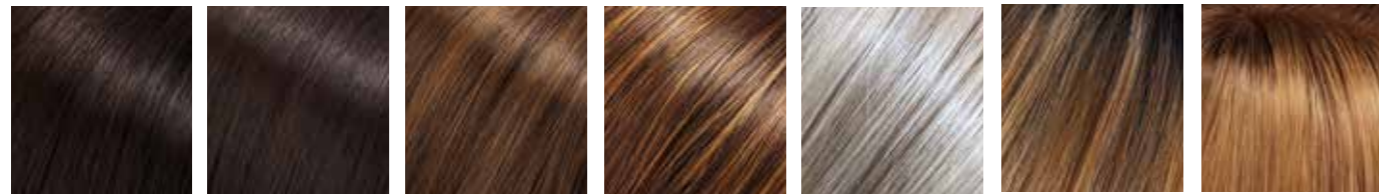
OPEN TOP

Kris

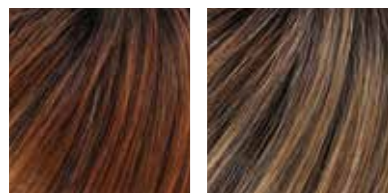
LAVORATA A MACCHINA
COLORE FOTO: 1426S10



COLORE FOTO: 1426S10



4 6 8/30 6F27 56F51 12FS8 1426S10



30A27S4 24BT18S8

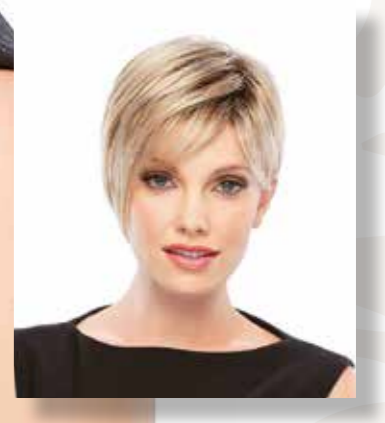
OPEN TOP

Natalie

LAVORATA A MACCHINA
COLORE FOTO: 12FS8



COLORE FOTO: 12FS8



4 6 8/32 6F27 12FS8 24BT18S8 30A27S4

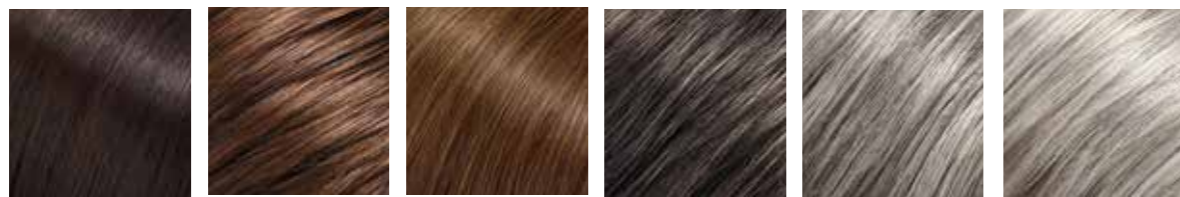
OPEN TOP

Peaches

LAVORATA A MACCHINA
COLORE FOTO: 12/30



COLORE FOTO: 12/30



6

8/32

12/30

44

51

56F51

HEAT DEFIANT

HD Jon Renau®

La collezione di parrucche HD Jon Renau combina la comodità delle parrucche sintetiche con la versatilità delle parrucche in capello vero. La fibra HD grazie alla particolare texture setosa e alla struttura elastica ricalca lo splendore e la lucentezza dei capelli veri. Resistente al calore fino a 130°/135° gradi permette di reinventare il taglio e il look della parrucca ogni giorno. Le parrucche HD possono essere acconciate a piacere con phon, piastra o arricciacapelli.

PIASTRARE E ARRICCIARE LA FIBRA HD

La fibra HD può essere arricciata o stirata. Si consiglia di utilizzare arricciacapelli o piastra con indicatore di temperatura che non deve superare i 135° gradi. Mantenere una distanza di almeno 3 cm dai nodi per evitare che il calore li possa allentare.



PHON

ARRICCIACAPELLI

PIASTRA



● Si raccomanda l'uso giornaliero di HD SMOOTH per proteggere la fibra

HD

Haute

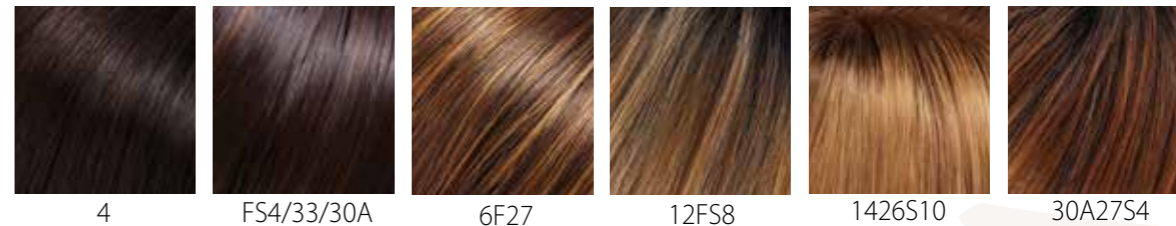
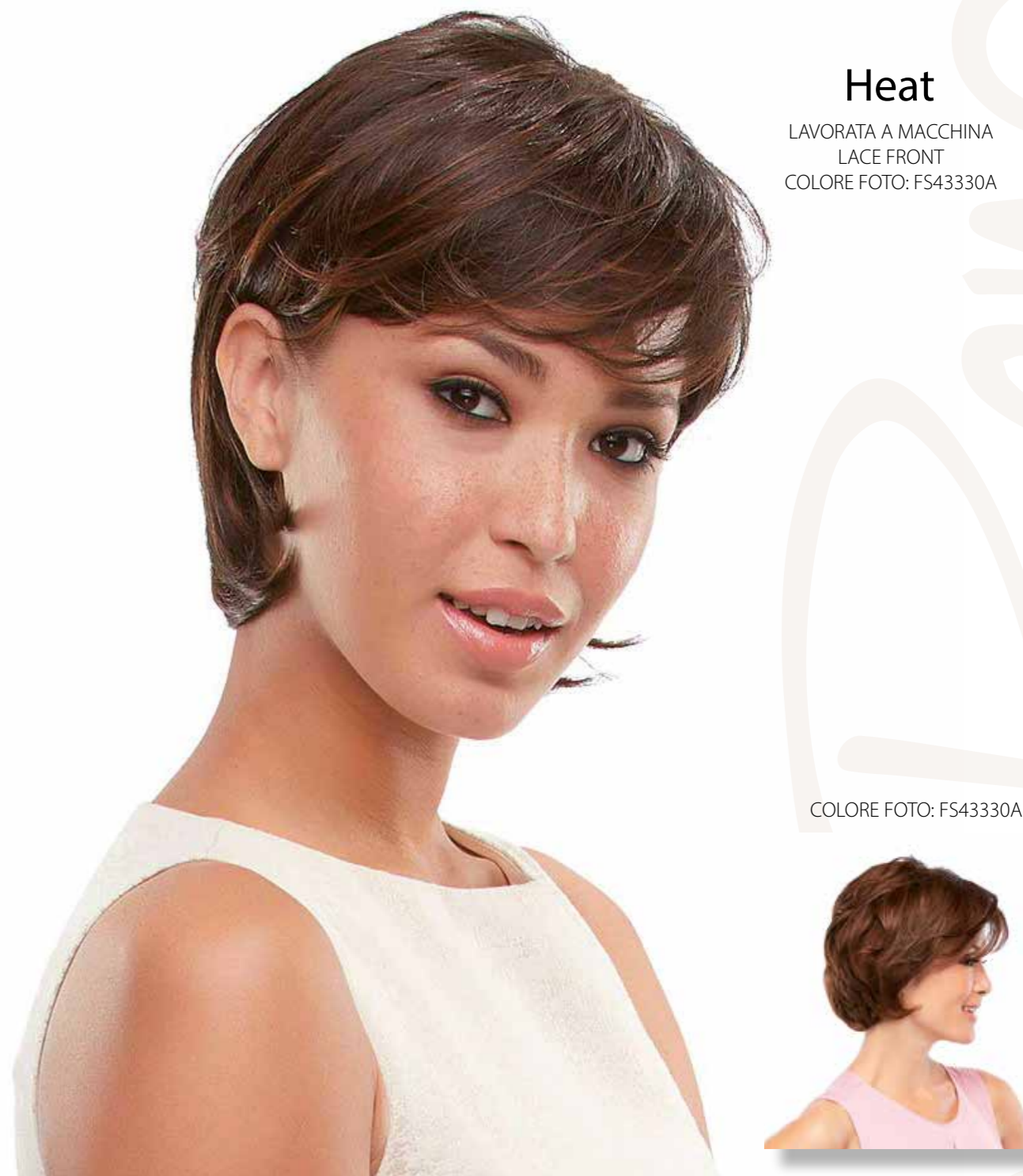
MONO PART
LACE FRONT
COLORE FOTO: 6F27



HD

Heat

LAVORATA A MACCHINA
LACE FRONT
COLORE FOTO: FS43330A



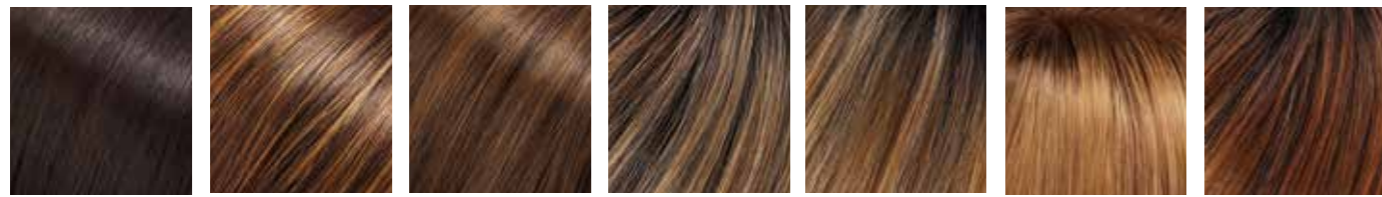
HD



Naomi

MONOFILAMENTO
LACE FRONT
COLORE FOTO:1426S10

COLORE FOTO: 1426S10



6 6F27 8/30 24BT18S8 12FS8 1426S10 30A27S4

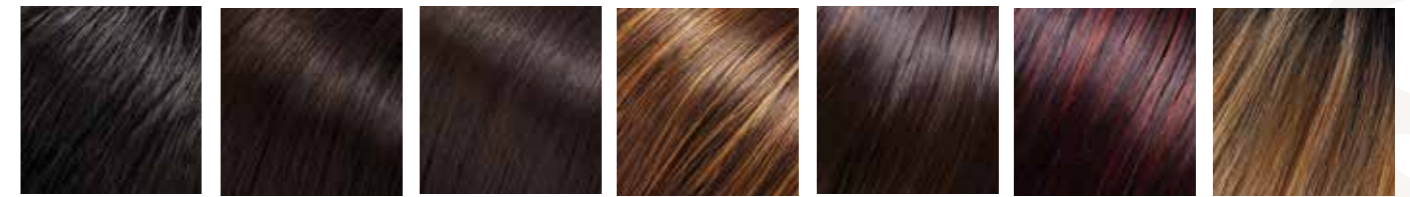
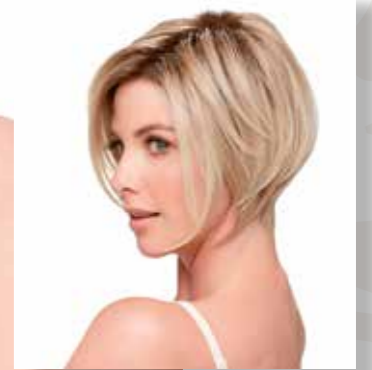
HD



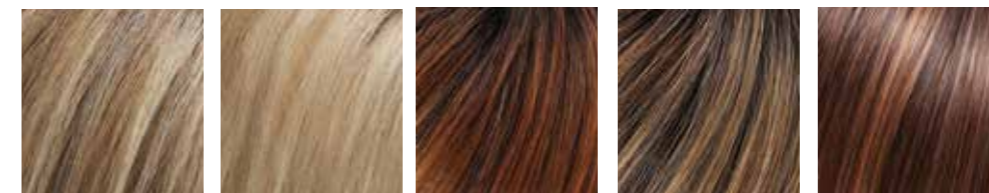
Ignite

LAVORATA A MACCHINA
LACE FRONT
COLORE FOTO: 22F16S8

COLORE FOTO: 22F16S8



1B 4 6 6F27 FS4/33/30A FS2V/31V 12FS8



12FS12 22F16S8 30A27S4 24BT18S8 FS6/30/27

HD

Eve

MONOFILAMENTO
LACE FRONT
COLORE FOTO: 12FS8



HD

Elizabeth

MONOFILAMENTO
LAVORATA A MANO
LACE FRONT
COLORE FOTO: FS26/31S6



HD

Drew

MONOFILAMENTO
LACE FRONT
COLORE FOTO: 12FS12



COLORE FOTO: 12FS12



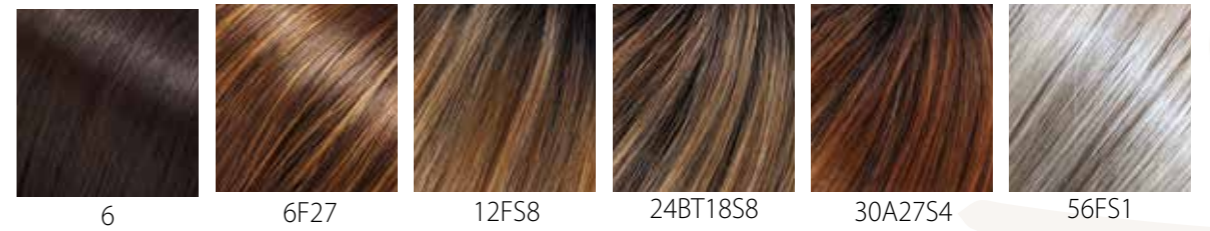
HD

Anne

MONOFILAMENTO
LAVORATA A MANO
LACE FRONT
COLORE FOTO: 12FS8



COLORE FOTO: 12FS8





Jon Renau®

DISTRIBUTED BY

FAIR FASHION®

Fair Fashion S.r.l. Via Stalingrado, 71/5B - 40128 Bologna - Italy - Tel. 051 327184

www.fairfashion.it

info@fairfashion.it - ordini@fairfashion.it



Seguici su Facebook