



Jon Renau®  
WIGS COLLECTION

FAIR & FASHION®

2023



# Jon Renau®

WIGS COLLECTION

## SMART LACE

|                     |        |
|---------------------|--------|
| BROOKLYN            | PG. 6  |
| CAMERON PETITE LITE | PG. 4  |
| DIANE               | PG. 8  |
| EVAN                | PG. 15 |
| HALSEY              | PG. 12 |
| JANUARY             | PG. 7  |
| JULIA               | PG. 17 |
| KRISTEN             | PG. 14 |
| MARISKA PETITE      | PG. 9  |
| MEG                 | PG. 11 |
| MIRANDA             | PG. 5  |
| RUBY                | PG. 16 |
| SCARLETT PETITE     | PG. 13 |
| VICTORIA            | PG. 10 |

## O'SOLITE

|         |        |
|---------|--------|
| ALLURE  | PG. 23 |
| GABY    | PG. 19 |
| JAZZ    | PG. 20 |
| KRIS    | PG. 22 |
| MAISIE  | PG. 18 |
| NATALIE | PG. 21 |
| PEACHES | PG. 24 |

## WIGS HD

|           |        |
|-----------|--------|
| ANNE      | PG. 31 |
| DREW      | PG. 33 |
| ELIZABETH | PG. 32 |
| EVE       | PG. 30 |
| HAUTE     | PG. 28 |
| HEAT      | PG. 34 |
| IGNITE    | PG. 29 |
| NAOMY     | PG. 27 |
| RITA      | PG. 26 |

## TOPPERS HD

|                    |        |
|--------------------|--------|
| EASIPART HD MEDIUM | PG. 36 |
| EASIPART HD LARGE  | PG. 37 |

## SMART LACE

Jon Renau propone un lace front realizzato in tessuto estremamente sottile.

SmartLace è lavorato a mano, i capelli sono annodati uno ad uno creando l'illusione che stiano crescendo dalla cute.

Inoltre un nuovo modello è disponibile nell'innovativo SMART LACE LITE che va da orecchio ad orecchio.

## OPEN TOP – LAVORATE A MACCHINA

Le parrucche O'Solite sono facilmente maneggiabili, soffici e confortevoli.

La calotta aperta permette una maggior aerazione della cute, inoltre l'esclusivo design ne riduce il peso.

Le parrucche O'Solite hanno infatti un peso minore rispetto alle tradizionali parrucche a macchina più pesanti. Due modelli nuovi sono disponibili in questa collezione.

## PARRUCCHE HD

Fra le fibre resistenti al calore presenti sul mercato la fibra HD di Jon Renau rappresenta un prodotto di eccellenza tecnologicamente avanzato.

Una fibra leggerissima e simile al tatto al capello vero che può essere lavorata con calore fino a 150° gradi. Le parrucche HD possono essere perciò asciugate con phon o acconciate a piacere, piastrate o arricciate.

Un nuovo modello è disponibile in questa collezione.

## TOPPERS HD

Gli infoltimenti capelli JON RENAU, realizzati in fibra sintetica HD, trasformano istantaneamente il tuo look aggiungendo volume ai capelli troppo fini.

Un'alternativa interessante alla parrucca completa, da valutare insieme al tuo hair stylist.

Applicazione con clips, disponibili in taglia media e taglia XL nella lunghezza capelli di 30cm. La fibra HD può essere acconciata con calore fino a 150° gradi.

Scopri i nuovi fantastici colori con effetto shatush nel modello Miranda!  
AUTUMN S6-30A27RO - FAWN S8-18/26RO - SOLSTICE S18-60/102RO - SUNSHINE S14/26/88RO

JON RENAU

# CASCADING COLOR



Tutti i biondi più belli made in California sono ora disponibili in tantissimi modelli.  
MALIBU BLONDE 12FS12 - VENICE BLONDE 22F16S8 - PALM SPRINGS BLONDE FS24/102S12  
LAGUNA BLONDE FS17/101S18

JON RENAU | EASHAIR

# CALIFORNIA Blonde

15 ADDITIONAL STYLES NOW AVAILABLE



GORGEOUS GREY COLLECTION

Scopri le nuove sfumature di grigio oggi disponibili in tantissimi modelli!  
MIST 39/51/60 - MOONLIGHT 92 - PEPPERCORN 1B/60

JON RENAU

# GORGEOUS GREY



JON RENAU

# TOPPER COLLECTION

LET'S TAKE IT FROM THE TOP





NEW

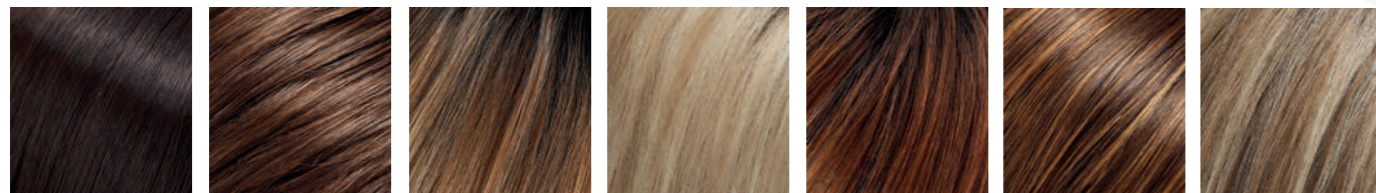
# SMART LACE *by Renau*

## CAMERON PETITE LITE

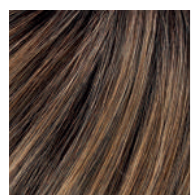
LAVORATA A MANO - LACE FRONT DA  
ORECCHIO AD ORECCHIO



COLORE FOTO 24BT18S8



6 8/32 12FS8 22F16S8 30A27S4 6F27 12FS12



24BT18S8

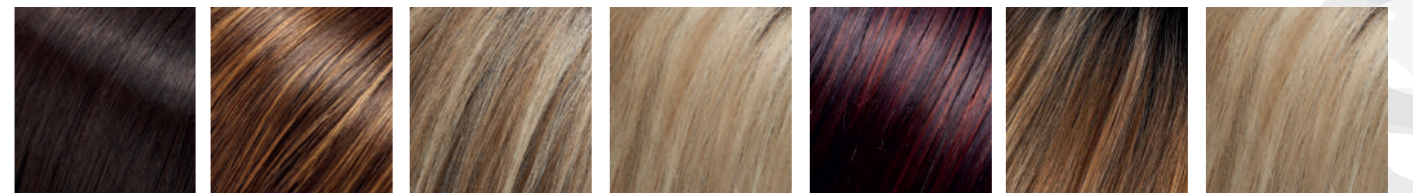
# SMART LACE *by Renau*

## MIRANDA

MONO PART - LACE FRONT



COLORE FOTO S6-30A27RO



6 6F27 12FS12 22F16S8 FS2V/31V 12FS8 22F16S8



S6-30A27RO S18-60/102RO S8-18/26RO S14/2688RO



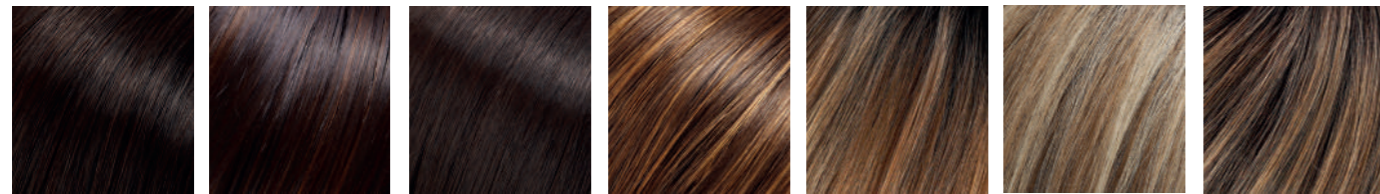
SMART LACE  
*by Renau*

BROOKLYN

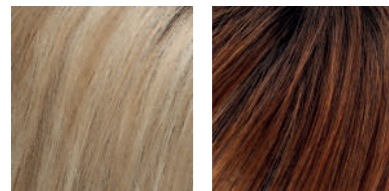
MONOFILAMENTO  
 LACE FRONT



COLORE FOTO 22F16S8



4 FS4/33/30A 6 6F27 12FS8 12FS12 24BT18S8



22F16S8 30A27S4

SMART LACE  
*by Renau*

JANUARY

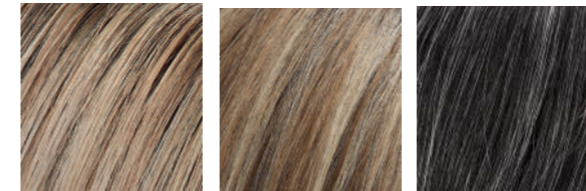
MONOFILAMENTO  
 LACE FRONT



COLORE FOTO: S17/101S18



6 6F27 8/32 12FS8 22F16S8 30A27S4 FS2V/31V



FS17/101S18 12FS12 1B/60 Peppercorn



# SMART LACE by Renou

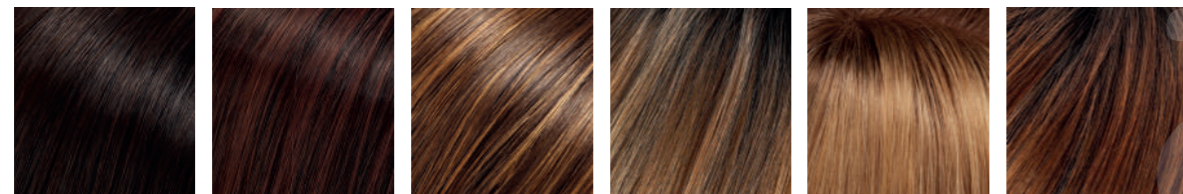


## DIANE

MONOFILAMENTO  
LAVORATA A MANO  
LACE FRONT



COLORE FOTO: 6F27



4    4/33    6F27    12FS8    1426S10    30A27S4

# SMART LACE by Renou

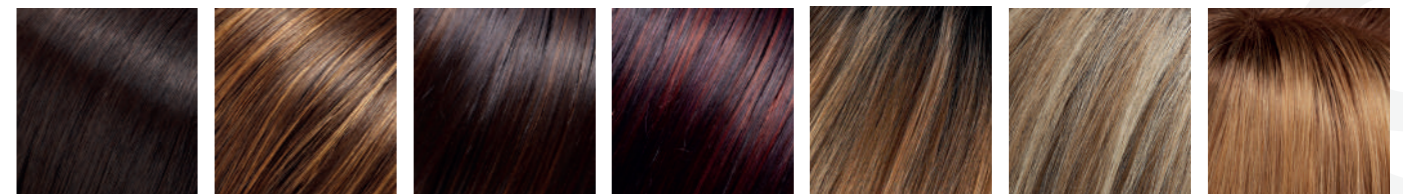


## MARISKA PETITE

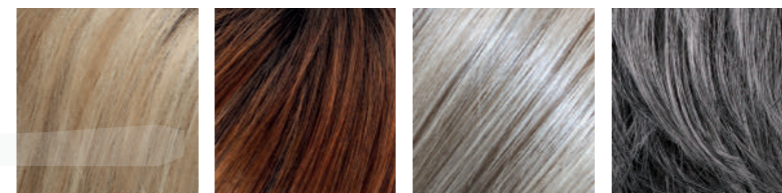
MONOFILAMENTO  
LAVORATA A MANO  
LACE FRONT



COLORE FOTO: FS2V/31V



6    6F27    FS4/33/30A    FS2V/31V    12FS8    12FS12    1426S10



22F16S8    30A27S4    56F51    Moonlight 92



SMART LACE  
for Renau

VICTORIA

MONOFILAMENTO  
LAVORATA A MANO  
LACE FRONT



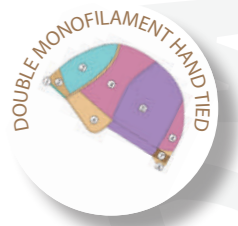
COLORE FOTO: FS17/101S18



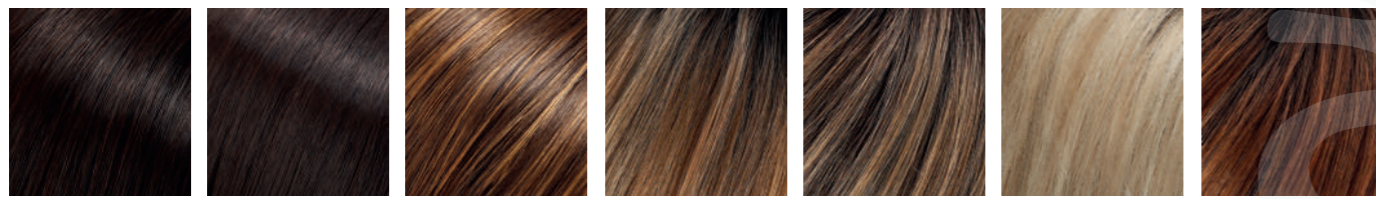
SMART LACE  
for Renau

MEG

MONOFILAMENTO  
LAVORATA A MANO



COLORE FS26/31S6



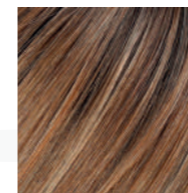
4      6      6F27      12FS8      24BT18S8      22F16S8      30A27S4



FS17/101S18      12FS12



6      6F27      12FS8      FS2V/31V      30A27S4      12FS12      22F16S8



FS26/31S6



SMART LACE  
by Renau

**HALSEY**

LAVORATA A MACCHINA  
LACE FRONT



COLORE FOTO: FS4/33/30A



6 8/32 12FS8 22F16S8 30A27S4 FS2V/31V



FS4/33/30A 12FS12

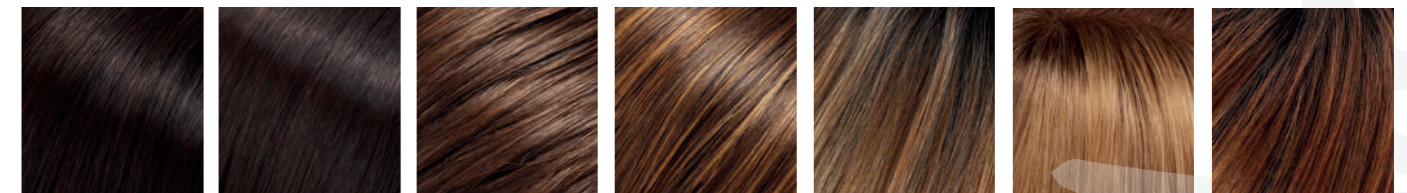
SMART LACE  
by Renau

**SCARLETT PETITE**

LAVORATA A MACCHINA  
LACE FRONT



COLORE FOTO: 12FS8



4/33 6 8/32 6F27 12FS8 1426S10 30A27S4



# SMART LACE by Renou

## KRISTEN

LAVORATA A MACCHINA  
LACE FRONT



COLORE FOTO: 12FS8



# SMART LACE by Renou

## EVAN

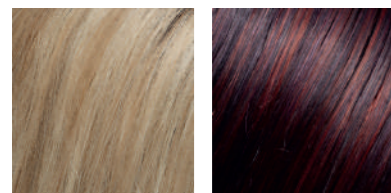
LAVORATA A MACCHINA  
LACE FRONT



COLORE FOTO: 1BRH30



1B 4 6 FS4/33/30A 12FS8 12FS12 1426S10



22F16S8 FS2V/31V



1BRH30 4 6 8/32 12FS8 1426S10 22F16S8



30A27S4 56F51 1B/60 Peppercorn Moonlight 92



# SMART LACE Ion Renau

**RUBY**  
LAVORATA A MACCHINA  
LACE FRONT



COLORE FOTO: 12FS8



# SMART LACE Ion Renau

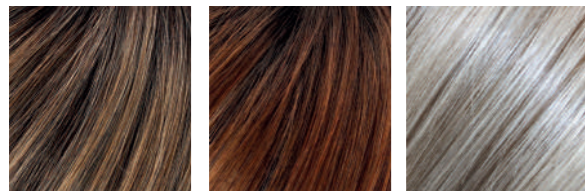
**JULIA**  
MONOFILAMENTO  
LACE FRONT



COLORE FOTO: 56F51



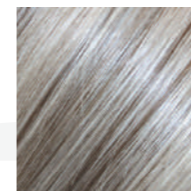
6 6F27 8/30 FS4/33/30A FS2V/31V 12FS8 1426S10



24BT18S8 30A27S4 56F51



1B 6 8/32 6F27 12FS8 24BT18S8



56F51



NEW

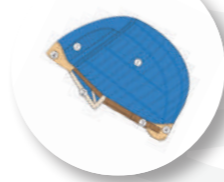


O SOLITE  
*Ion Renau*

MAISIE

LAVORATA A MACCHINA

OPEN CAP



COLORE FOTO: 12FS8



6 6F27 12FS8 30A27S4 12FS12 22F16S8

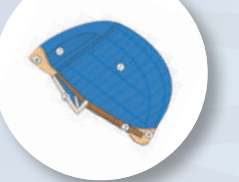


O SOLITE  
*Ion Renau*

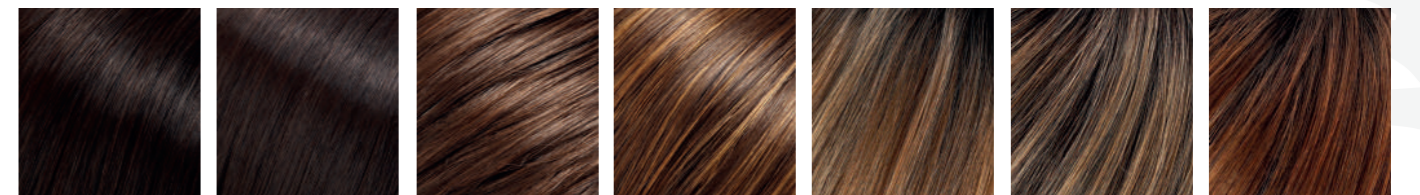
JAZZ

LAVORATA A MACCHINA

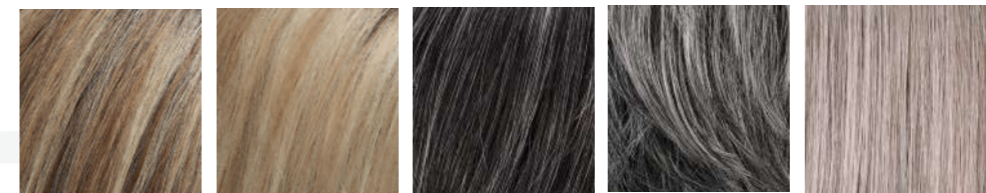
OPEN CAP



COLORE FOTO: 92 MOONLIGHT



4 6 8/32 6F27 12FS8 24BT18S8 30A27S4



12FS12 22F16S8 1B/60 Peppercorn Moonlight 92 39/51/60



NEW

# O SOLITE Jon Renau

## GABY

LAVORATA A MACCHINA



COLORE FOTO: FS17/101S18



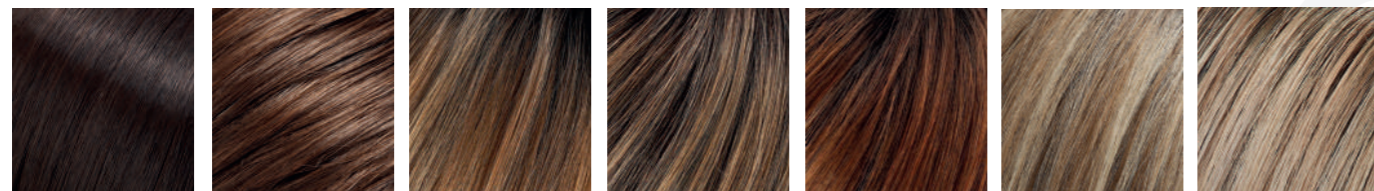
# O SOLITE Jon Renau

## NATALIE

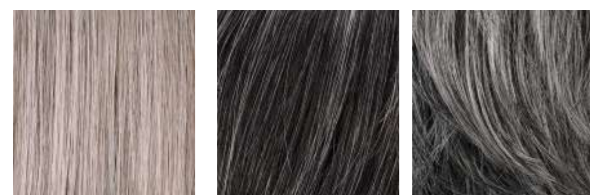
LAVORATA A MACCHINA



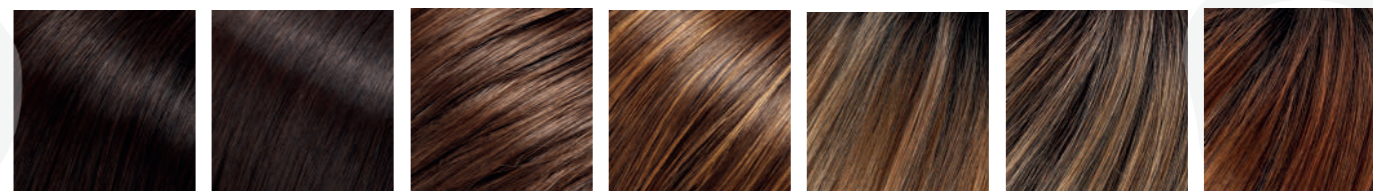
COLORE FOTO: 60



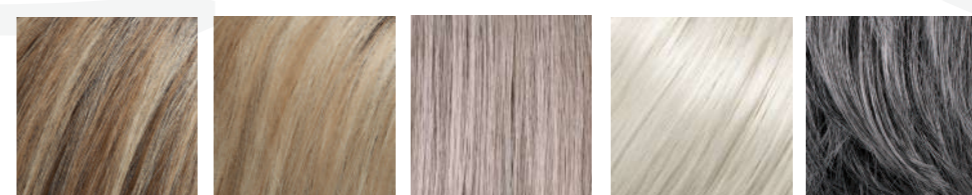
6 8/32 12FS8 24BT18S8 30A27S4 12FS12 FS17/101S18



39/51/60 1B/60 Peppercorn Moonlight 92



4 6 8/32 6F27 12FS8 24BT18S8 30A27S4



12FS12 22F16S8 39/51/60 60 Moonlight 92

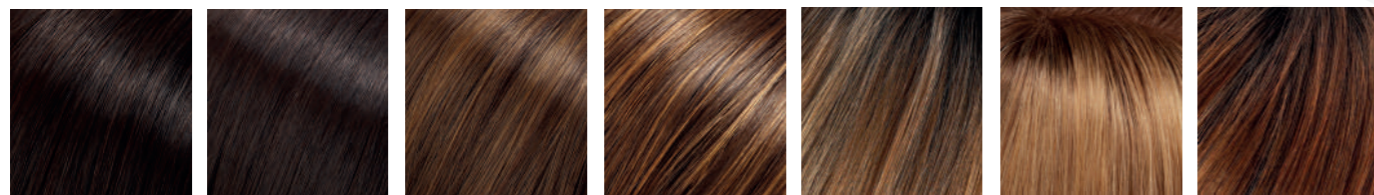


O SOLITE  
*Jon Renau*

**KRIS**  
 LAVORATA A MACCHINA



COLORE FOTO 1426S10



4 6 8/30 6F27 12FS8 1426S10 30A27S4



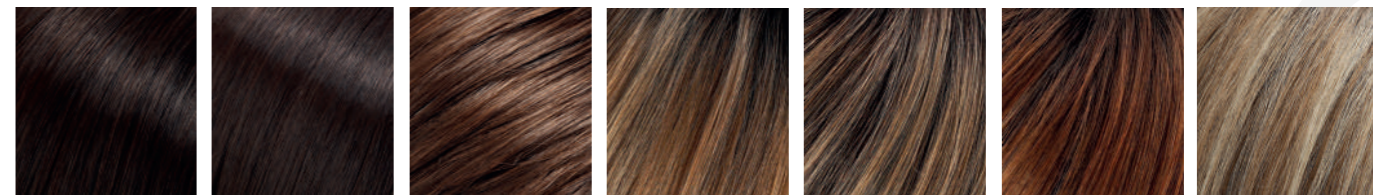
24BT18S8 12FS12 22F16S8 56F51

O SOLITE  
*Jon Renau*

**ALLURE**  
 LAVORATA A MACCHINA



COLORE FOTO: 12FS8



4 6 8/32 12FS8 24BT18S8 30A27S4 12FS12



22F16S8 44 51 56 92





O SOLITE  
Jon Renau®

PEACHES  
LAVORATA A MACCHINA



COLORE FOTO: 12/30



# HD Jon Renau® HEAT DEFIANT

La collezione di parrucche HD Jon Renau combina la comodità delle parrucche sintetiche con la versatilità delle parrucche in capello vero. La fibra HD grazie alla particolare texture setosa e alla struttura elastica ricalca lo splendore e la lucentezza dei capelli veri. Resistente al calore fino a 150° gradi permette di reinventare il taglio e il look della parrucca ogni giorno. Le parrucche HD possono essere acconciate a piacere con phon, piastra o arricciacapelli.

### PIASTRARE E ARRICCIARE LA FIBRA HD

La fibra HD può essere arricciata o stirata. Si consiglia di utilizzare arricciacapelli o piastra con indicatore di temperatura che non deve superare i 150° gradi. Mantenere una distanza di almeno 3 cm dai nodi per evitare che il calore li possa allentare.



PHON

ARRICCIACAPELLI

PIASTRA



● Si raccomanda l'uso giornaliero di HD SMOOTH per proteggere la fibra



NEW

HD  
Jon Renau.



RITA

MONOFILAMENTO  
LACE FRONT



COLORE FOTO : FS17/101S18



6      6F27      24BT18S8      12FS8      30A27S4      FS17/101S18

HD  
Jon Renau.



NAOMI

MONOFILAMENTO LACE FRONT



COLORE FOTO : 1426S10



6      6F27      8/30      24BT18S8      12FS8      1426S10      30A27S4



12FS12      22F16S8      56FS1



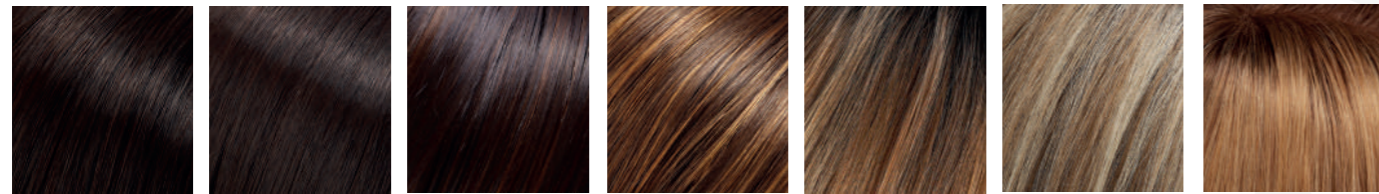
HD  
Jon Renau.

HAUTE

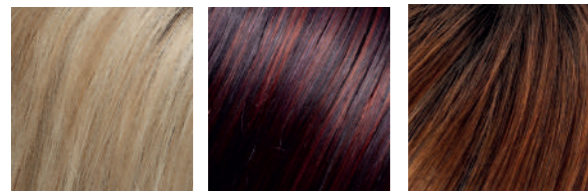
MONO PART  
LACE FRONT



COLORE FOTO: 6F27



4 6 FS4/33/30A 6F27 12FS8 12FS12 1426S10



22F16S8 FS2V/31V 30A27S4

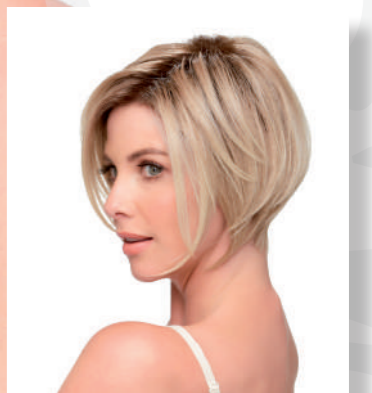
HD  
Jon Renau.

IGNITE

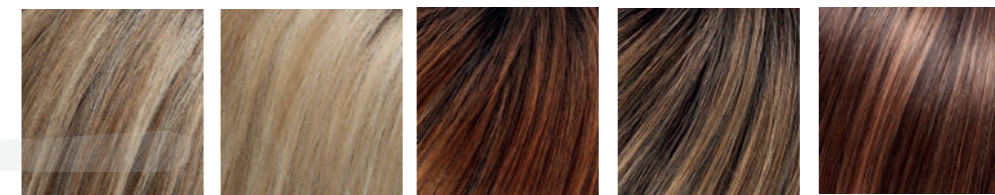
LAVORATA A MACCHINA  
LACE FRONT



COLORE FOTO: 22F16S8



1B 4 6 6F27 FS4/33/30A FS2V/31V 12FS8



12FS12 22F16S8 30A27S4 24BT18S8 FS6/30/27



HD  
Jon Renau.

EVE

MONOFILAMENTO  
LACE FRONT



COLORE FOTO: 12FS8



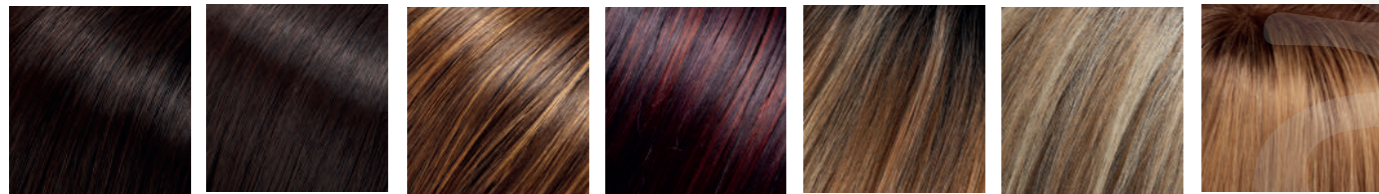
HD  
Jon Renau.

ANNE

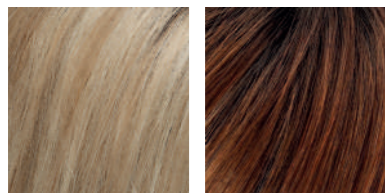
MONOFILAMENTO  
LAVORATA A MANO  
LACE FRONT



COLORE FOTO: 12FS8



4 6 6F27 FS2V/31V 12FS8 12FS12 1426S10



22F16S8 30A27S4



6 6F27 12FS8 24BT18S8 30A27S4 12FS12 22F16S8



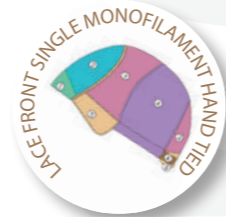
56FS1



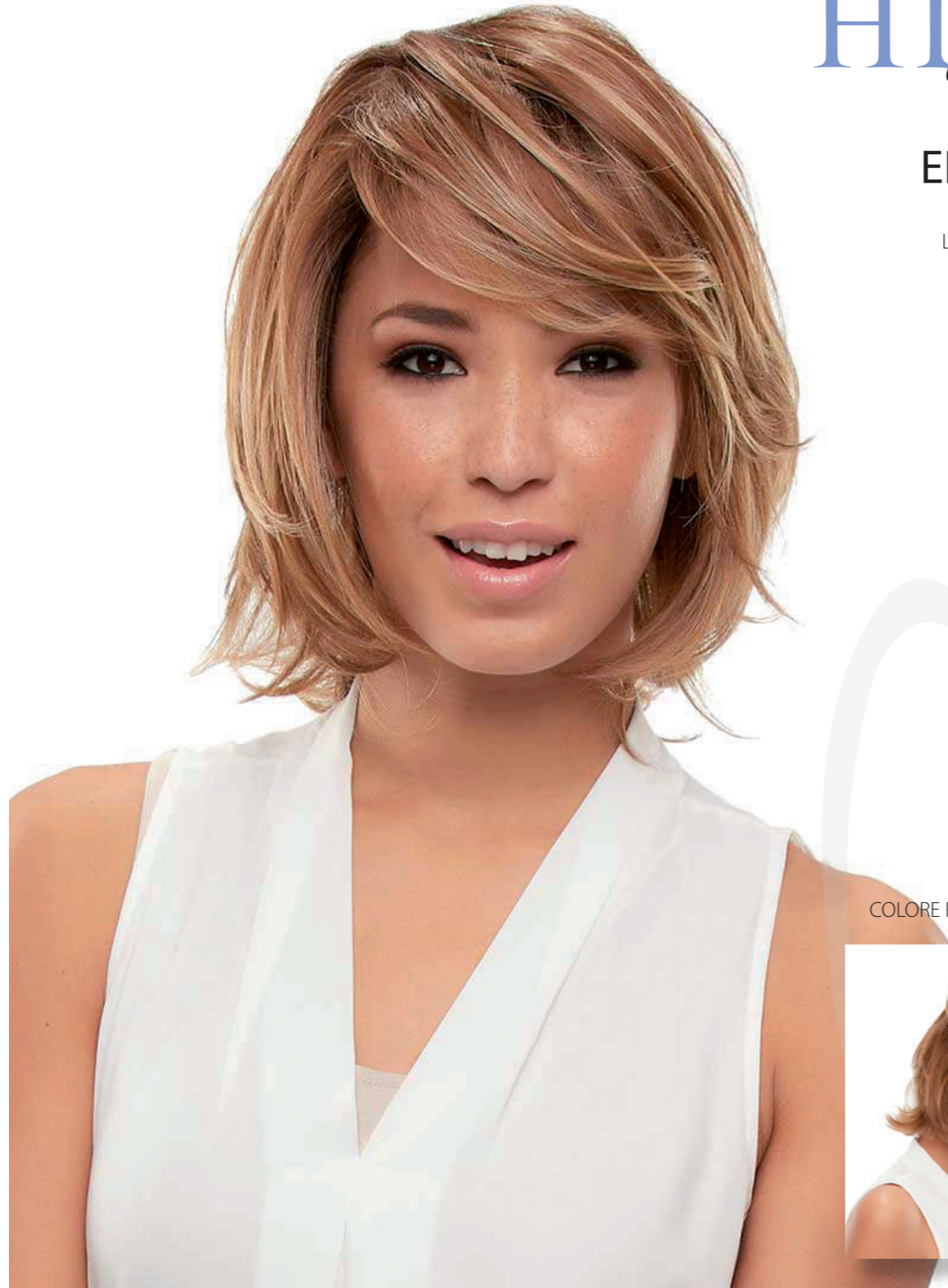
HD  
Jon Renau.

**ELIZABETH**

MONOFILAMENTO  
LAVORATA A MANO  
LACE FRONT



COLORE FOTO: FS26/31S6



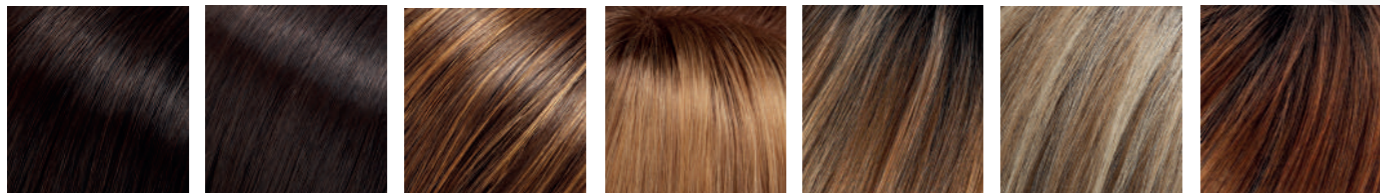
HD  
Jon Renau.

**DREW**

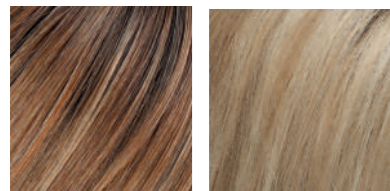
MONOFILAMENTO  
LACE FRONT



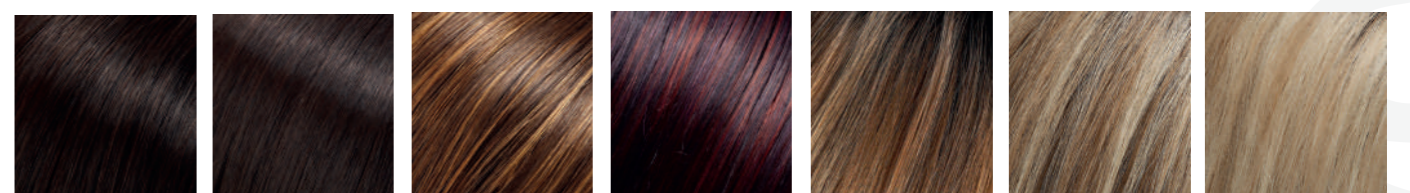
COLORE FOTO: 12FS12



4 6 6F27 1426S10 12FS8 12FS12 30A27S4



FS26/31S6 22F16S8



4 6 6F27 FS2V/31V 12FS8 12FS12 22F16S8



30A27S4 24BT18S8 FS6/30/27 FS4/33/30A



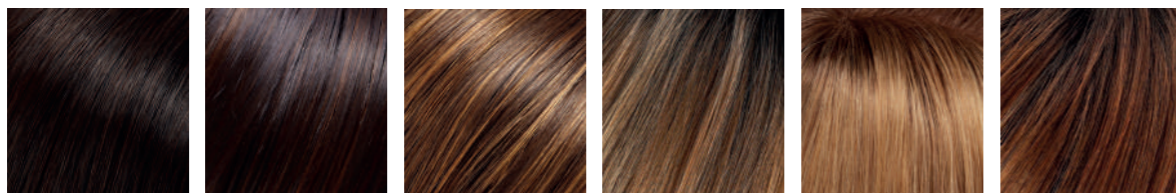
HD  
Jon Renau.

HEAT

LAVORATA A MACCHINA  
LACE FRONT



COLORE FOTO: FS4/33/30A



4

FS4/33/30A

6F27

12FS8

1426S10

30A27S4

# NEW TOPPERS HD Jon Renau.

Easipart è un infoltimento non chirurgico indicato per tutte quelle persone che hanno un diradamento più accentuato sulla parte superiore della testa.

I capelli vengono annodati uno ad uno su una finissima rete in monofilamento garantendo, oltre al volume, un effetto particolarmente naturale.

A seconda delle esigenze della cliente Easipart può essere fissato in modo temporaneo sui capelli con dei pettinini a clips.

Gli infoltimenti capelli JON RENAU, realizzati in fibra sintetica HD, trasformano istantaneamente il tuo look aggiungendo volume ai capelli troppo fini.

Un'alternativa interessante alla parrucca completa, da valutare insieme al tuo hair stylist.

Applicazione con clips, disponibili in taglia media e taglia grande XL nella lunghezza capelli di 30cm.

La fibra HD può essere acconciata con calore fino a 150° gradi.

## PIASTRARE E ARRICCIARE LA FIBRA HD

La fibra HD può essere arricciata o stirata. Si consiglia di utilizzare arricciacapelli o piastra con indicatore di temperatura che non deve superare i 150° gradi. Mantenere una distanza di almeno 3 cm dai nodi per evitare che il calore li possa allentare.



PHON

ARRICCIACAPELLI

PIASTRA



NEW

TOPPER  
Jon Renau.

NEW

TOPPER  
Jon Renau.

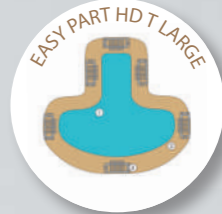
EASIPART HD MEDIUM

MONOFILAMENTO

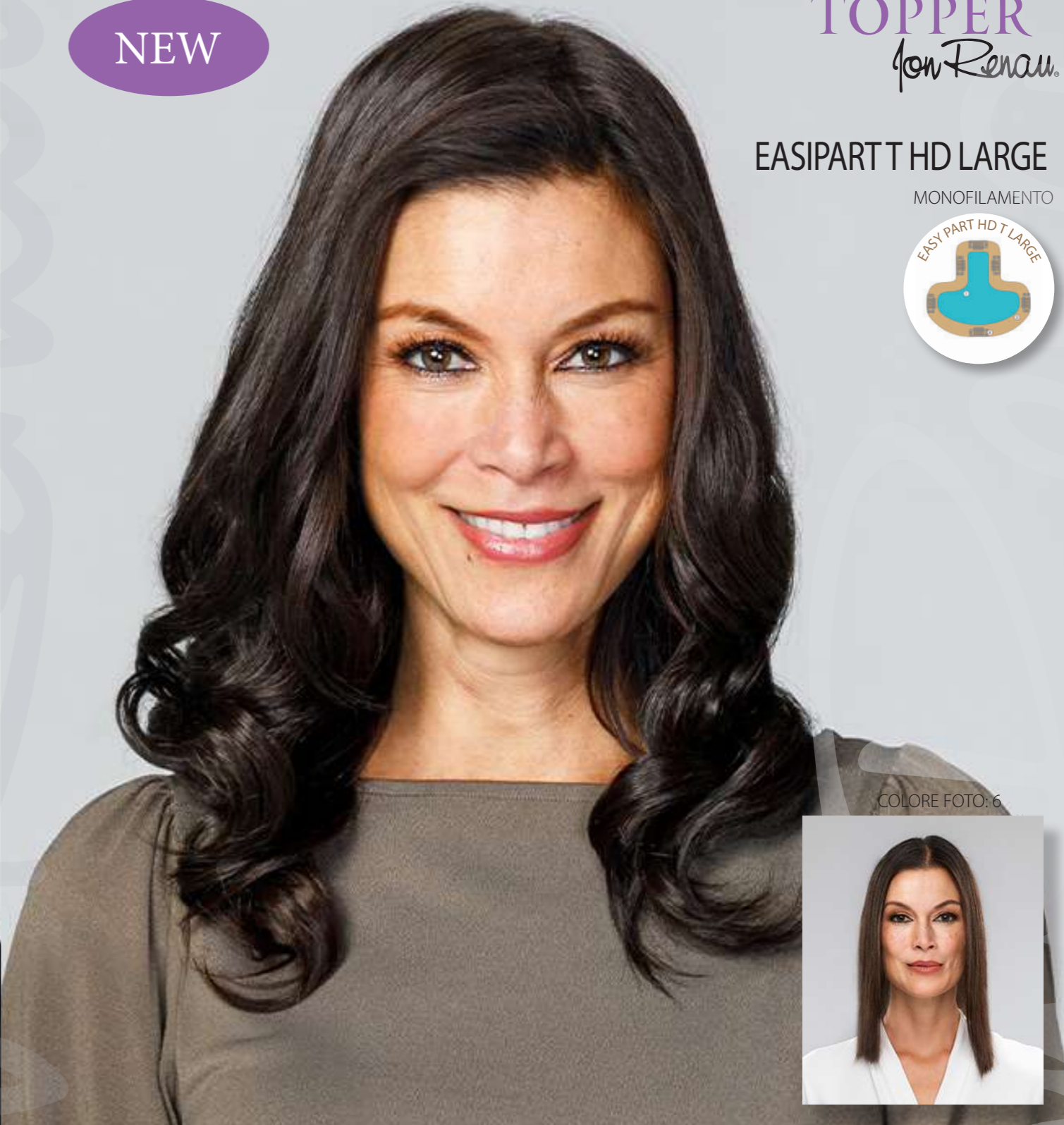


EASIPARTT HD LARGE

MONOFILAMENTO



COLORE FOTO: 12FS8



COLORE FOTO: 6



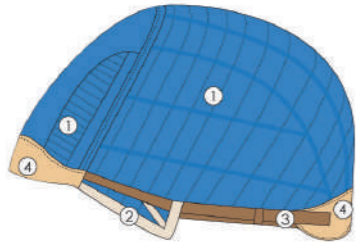
4 6 6F27 1426S10 12FS8 12FS12 22F16S8



4 6 6F27 1426S10 12FS8 12FS12 22F16S8

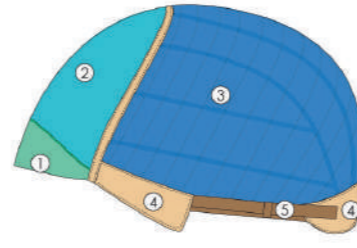


OPEN CAP



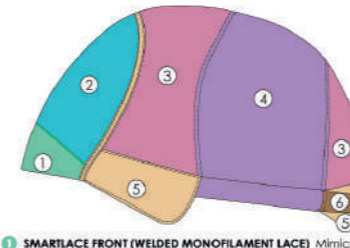
- 1 **OPEN WEFTED TOP + BACK** Allows superior ventilation for maximum scalp cooling with machine wefting
  - 2 **OPEN EAR TABS** Allows customization with bendable wire
  - 3 **ADJUSTABLE TABS** Allows the wearer to adjust the circumference
  - 4 **VELVET FRONT HAIRLINE/NAPE\*** Allows for increased hairline comfort
- \*Nape area includes two vertical bendable wires, which allow for customization

LACE FRONT / SINGLE MONOFILAMENT



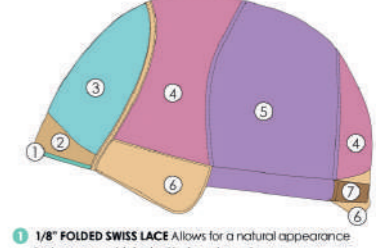
- 1 **SMARTLACE FRONT (WELDED MONOFILAMENT LACE)** Mimics a natural hairline, hair is hand tied one by one
- 2 **SINGLE MONOFILAMENT** Allows multi-directional parting while providing the appearance of natural growth
- 3 **OPEN WEFTED BACK** Allows superior ventilation for maximum scalp cooling with machine wefting
- 4 **VELVET EAR TABS + NAPE** Allows smooth customization with bendable wire
- 5 **ADJUSTABLE TABS** Allows the wearer to adjust the circumference

LACE FRONT / SINGLE MONOFILAMENT / HAND TIED



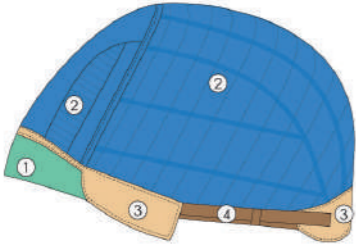
- 1 **SMARTLACE FRONT (WELDED MONOFILAMENT LACE)** Mimics a natural hairline, hair is hand tied one by one
- 2 **SINGLE MONOFILAMENT** Allows multi-directional parting while providing the appearance of natural growth
- 3 **100% HAND TIED CAP** Each hair is individually hand tied, creating the appearance of natural growth
- 4 **100% HAND TIED STRETCH SECTION** Allows customized stretch from front to back and ear to ear
- 5 **VELVET EAR TABS + NAPE** Allows smooth customization with bendable wire
- 6 **ADJUSTABLE TABS** Allows the wearer to adjust the circumference

DOUBLE MONOFILAMENT / HAND TIED



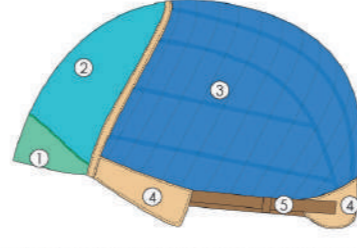
- 1 **1/8" FOLDED SWISS LACE** Allows for a natural appearance between your biological hair and your topper
- 2 **POLYURETHANE STRIP** For use with adhesive if needed
- 3 **DOUBLE MONOFILAMENT** Allows multi-directional parting while providing the appearance of natural growth
- 4 **100% HAND TIED CAP** Each hair is individually hand tied, creating the appearance of natural growth
- 5 **100% HAND TIED STRETCH SECTION** Allows customized stretch from front to back and ear to ear
- 6 **VELVET EAR TABS + NAPE** Allows smooth customization with bendable wire
- 7 **ADJUSTABLE TABS** Allows the wearer to adjust the circumference

LACE FRONT / OPEN CAP



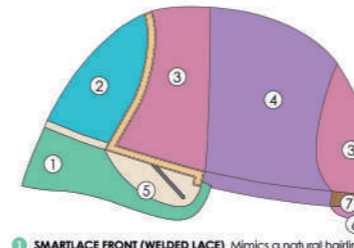
- 1 **SMARTLACE FRONT (WELDED MONOFILAMENT LACE)** Mimics a natural hairline, hair is hand tied one by one
- 2 **OPEN WEFTED TOP + BACK** Allows superior ventilation for maximum scalp cooling with machine wefting
- 3 **VELVET EAR TABS + NAPE** Allows smooth customization with bendable wire
- 4 **ADJUSTABLE TABS** Allows the wearer to adjust the circumference

LACE FRONT / SINGLE MONOFILAMENT

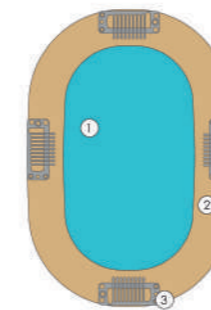


- 1 **SMARTLACE FRONT (WELDED MONOFILAMENT LACE)** Mimics a natural hairline, hair is hand tied one by one
- 2 **SINGLE MONOFILAMENT** Allows multi-directional parting while providing the appearance of natural growth
- 3 **OPEN WEFTED BACK** Allows superior ventilation for maximum scalp cooling with machine wefting
- 4 **VELVET EAR TABS + NAPE** Allows smooth customization with bendable wire
- 5 **ADJUSTABLE TABS** Allows the wearer to adjust the circumference

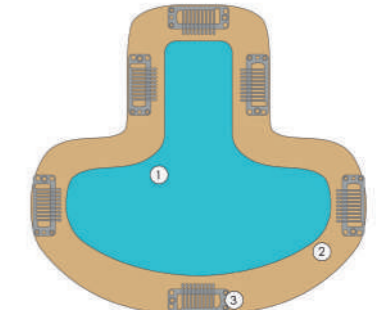
SMARTLACE LITE / LACE FRONT / SINGLE MONO / HAND TIED



- 1 **SMARTLACE FRONT (WELDED LACE)** Mimics a natural hairline, hair is hand tied one by one
- 2 **SINGLE MONOFILAMENT** Allows multi-directional parting while providing the appearance of natural growth
- 3 **100% HAND TIED CAP** Each hair is individually hand tied, creating the appearance of natural growth
- 4 **100% HAND TIED STRETCH SECTION** Allows customized stretch from front to back and ear to ear
- 5 **PU EAR TABS** with bendable wire, for adhesive use
- 6 **SILICONE NAPE** with bendable wire, allows for a non-slip grip
- 7 **ADJUSTABLE TABS** Allows the wearer to adjust the circumference



- 1 **WELDED MONOFILAMENT** Allows multi-directional parting while providing the appearance of natural growth
- 2 **PU COATED MONOFILAMENT** For use with adhesive if needed
- 3 **PRESSURE SENSITIVE CLIPS** To clip into hair if not using adhesive



- 1 **WELDED MONOFILAMENT** Allows multi-directional parting while providing the appearance of natural growth
- 2 **PU COATED MONOFILAMENT** For use with adhesive if needed
- 3 **PRESSURE SENSITIVE CLIPS** To clip into hair if not using adhesive





Jon Renau®

DISTRIBUTED BY

FAIR FASHION®

Fair Fashion S.r.l. Via Stalingrado, 71/5B - 40128 Bologna - Italy - Tel. 051 327184

[www.fairfashion.it](http://www.fairfashion.it)

[info@fairfashion.it](mailto:info@fairfashion.it) - [ordini@fairfashion.it](mailto:ordini@fairfashion.it)



Seguici su Facebook